

Switching Catalogs

(a process of changing kitchen files from one catalog to another catalog)

Switching catalogs is a process of changing a Kitchen/Design File from one manufacturer's catalog to another. Most importantly, it is not a perfect function (with any design program). There are many factors that determine the success of the process.

Some manufacturers set up their internal "link codes" to thwart or hinder switching to a competitive manufacturer's catalog. They make every effort to ensure that you may switch back and forth within their proprietary catalogs but they may desire to make it difficult for you to go to their competitors.

If a manufacturer, in the process of updating their catalog, moved items or sections around inside the catalog, the process of identifying and matching up may not occur. Styles and Pricing Settings are notorious for not transferring or creating a "ghost" if the manufacturer reorganizes these sections. The system seeks an item from the old catalog and looks in the new catalog for the same record or location and it isn't there any more.

Modified Items may not switch properly or at all if the user code modifies in the process of editing the item.

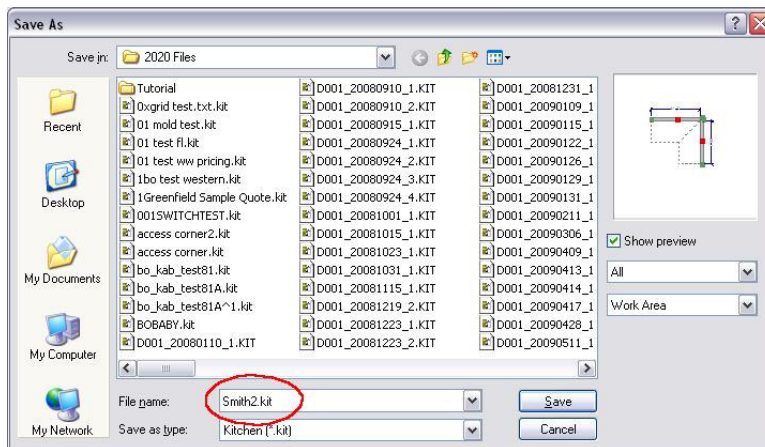
These are only a few reasons for issues with Switching.

The following is a recommended process for achieving the best success.

First Step: Save your design to a new name and switch it, not the original design file.

Pull up the design you wish to Switch.

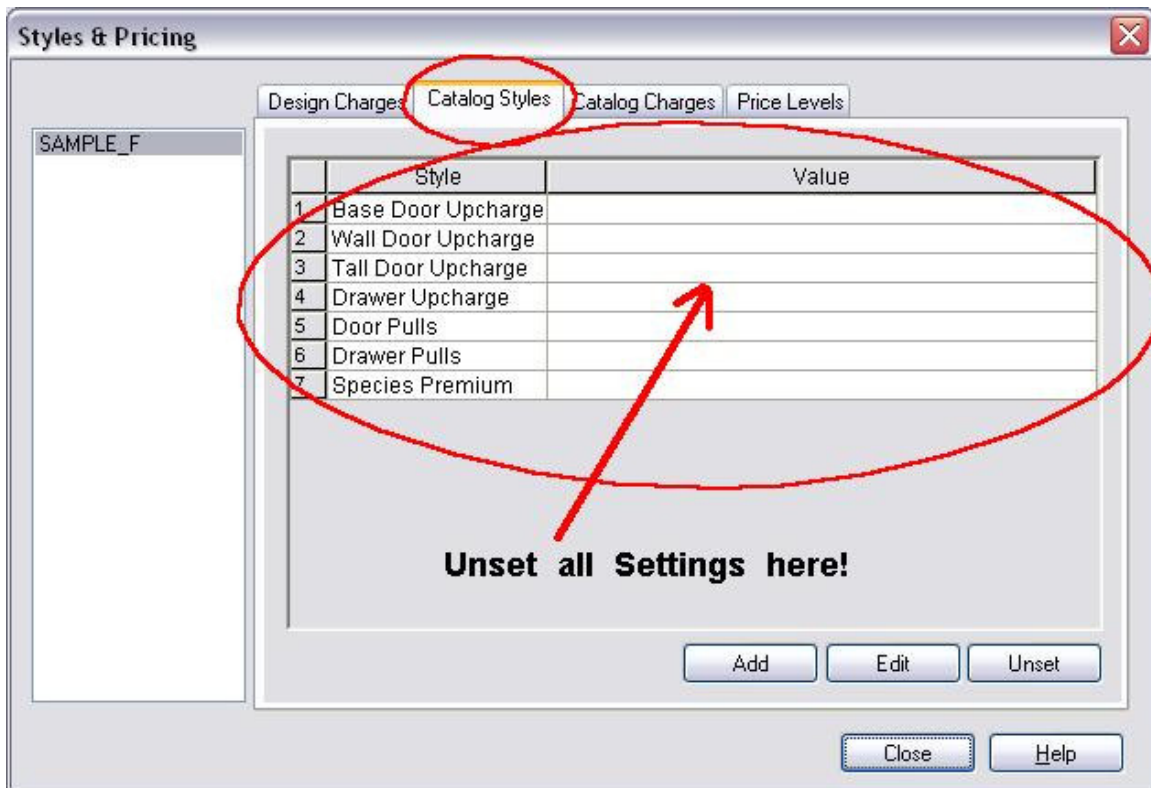
Go to FILE up on the top menu bar and then select "Save As..." from the drop-down. In the dialog box in the file name box...add a "2" behind the file name before the dot (see below).



You will now be working with Smith2 (note in the top left corner of your screen that the display says in parenthesis (Smith2.kit). This ensures that you can get back to your original design and that it will be “uncontaminated” by a possible mis-hap in the Switch Process. If a disaster occurs...you can always pull the original design back up and repeat this process to “try-again” or to modify this process to your personal preference. There is always more than one way to skin a cat, and always more than one way to do something in 2020.

Second Step: Go to Styles and Pricing and “Unset” all Catalog Styles Settings!

This will avoid any mis-haps if the section was reorganized in an update.

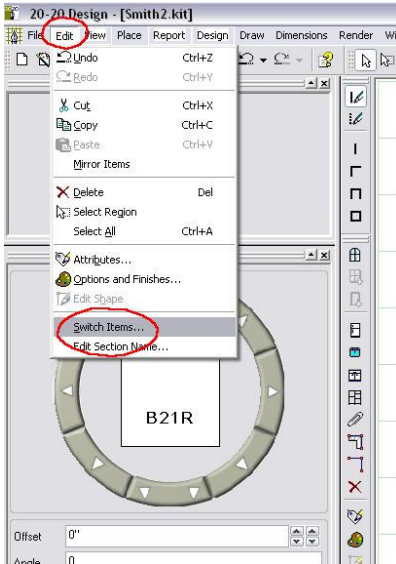


After unsetting all settings, Close this dialog.

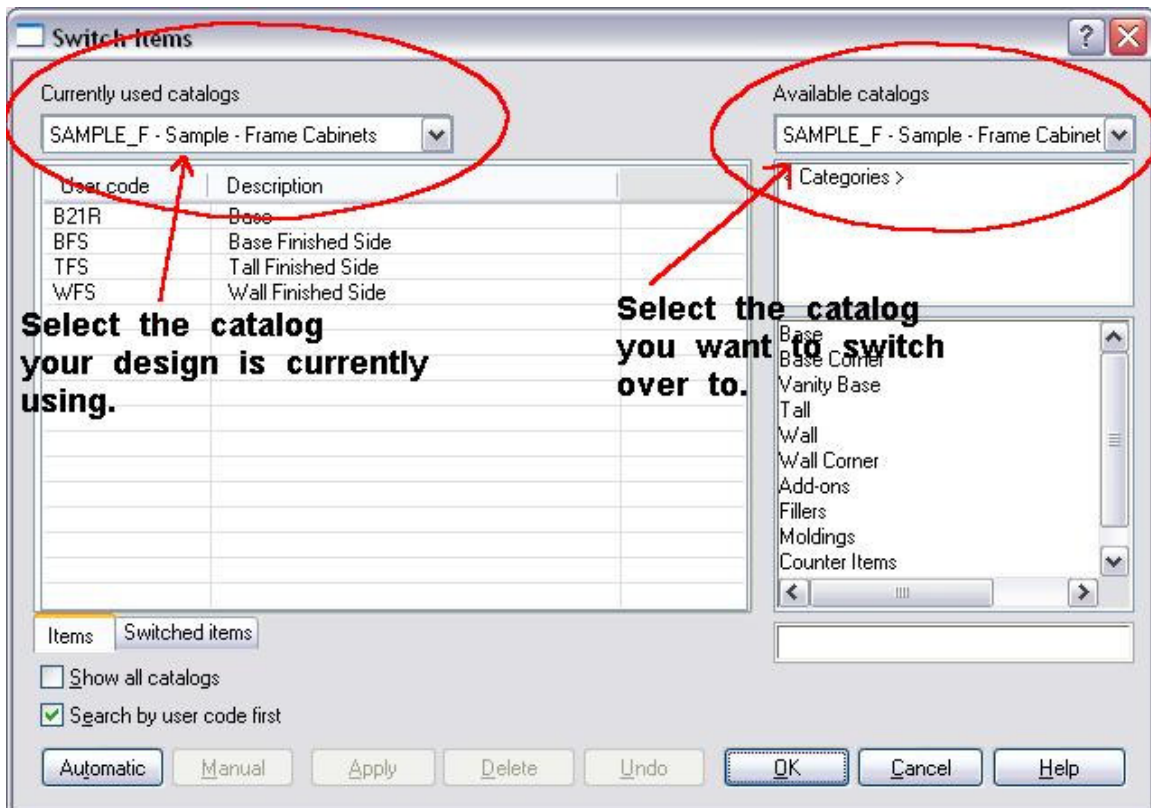
Now....you might consider removing Auto-Placed items like Top and Bottom Moldings and Toe Board (This is optional). I have seen various Versions of 2020 really mess up the identification of Auto-Placed Items if the respective sections were reorganized as well.

All else fails, you can try it with them and if it does a bad thing, you can remove them and then try the Switch Process....it's up to you.

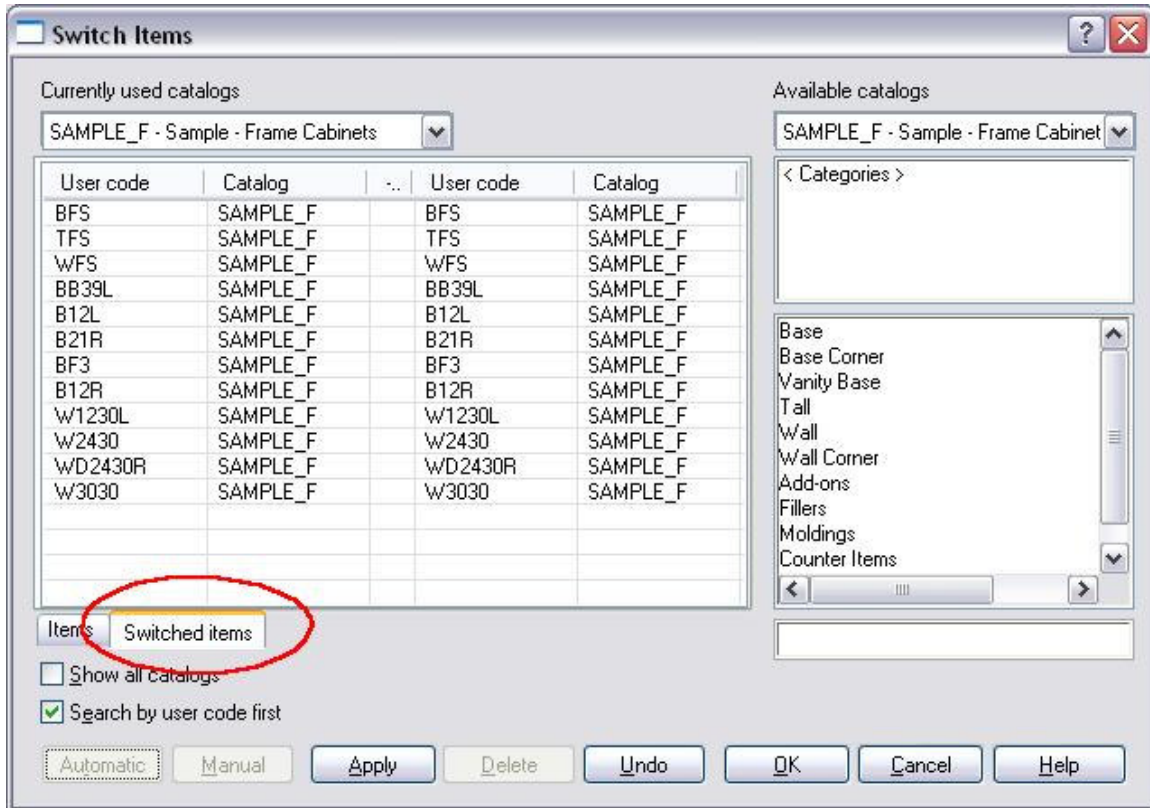
Third Step: “Switch Items” (finally we get to it).
Go to “Edit” up on the menu bar and slide down and select “Switch Items”.



The first setting in the dialog should be the catalog you are currently using (left hand side – see below) and then select the catalog you want to go to (right hand side – see below).



Then, you can click on “Automatic”.....and see what happens.
As a result, items listed on the “Switched Items Tab” are the items that literally switch from one catalog to the other. On the Items Tab, will be the items that did not switch.



Above you see (on the Switched Items Tab) a list of cabinets that were automatically selected and switched over. On the left side group are the original items and on the right side group are what they were converted to.

The Product listed on the “Items Tab” (that did not switch) can be handled in multiple ways.

This part can be a bit tedious.

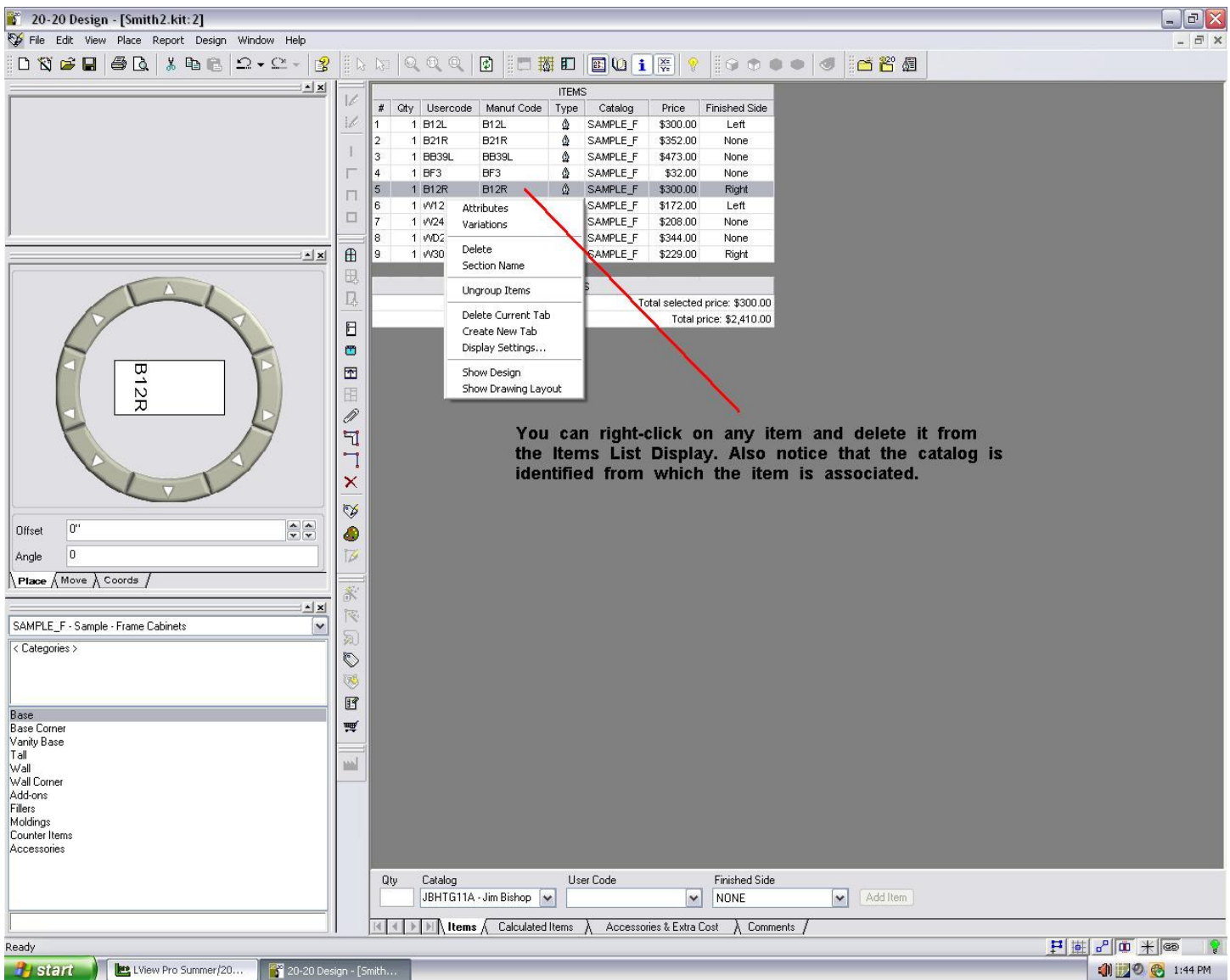
One way is: Click on the Items tab, and then click on the first item on the list. When you do, the Manual Button lights up. You can then drill down on the right hand side in the New Catalog and identify the item you want the item to be and when you get down to the item level in the menu, click the Manual Button and the item will be eliminated from your list. One-by-one you will have to do this.

Another way is: Apply and OK the switch process and then go to your design and delete the product that did not switch and replace with the correct product from the new catalog.

In addition, you can use the “Items List” (pulled up by clicking on this Icon shown below) to right-click and delete from the Items List. When you delete from the items list, it will eliminate the item from your design. In the Items list you can literally identify from which catalog the specific product is from also.



Here is the Items List Display:



#	Qty	Usercode	Manuf Code	Type	Catalog	Price	Finished Side
1	1	B12L	B12L		SAMPLE_F	\$300.00	Left
2	1	B21R	B21R		SAMPLE_F	\$352.00	None
3	1	BB39L	BB39L		SAMPLE_F	\$473.00	None
4	1	BF3	BF3		SAMPLE_F	\$32.00	None
5	1	B12R	B12R		SAMPLE_F	\$300.00	Right
6	1	W12	Attributes		SAMPLE_F	\$172.00	Left
7	1	W24	Variations		SAMPLE_F	\$208.00	None
8	1	WD2			SAMPLE_F	\$344.00	None
9	1	W30			SAMPLE_F	\$229.00	Right

Total selected price: \$300.00
Total price: \$2,410.00

You can right-click on any item and delete it from the Items List Display. Also notice that the catalog is identified from which the item is associated.

I recommend you just.....play with it! ON A RENAMED FILE!