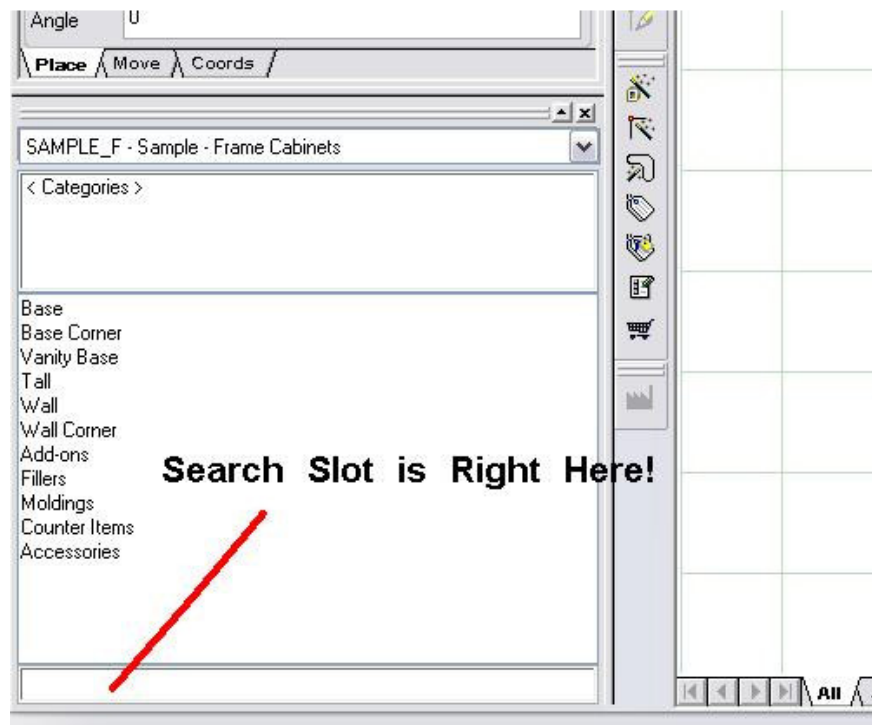


SEARCH THE CATALOG DATABASE

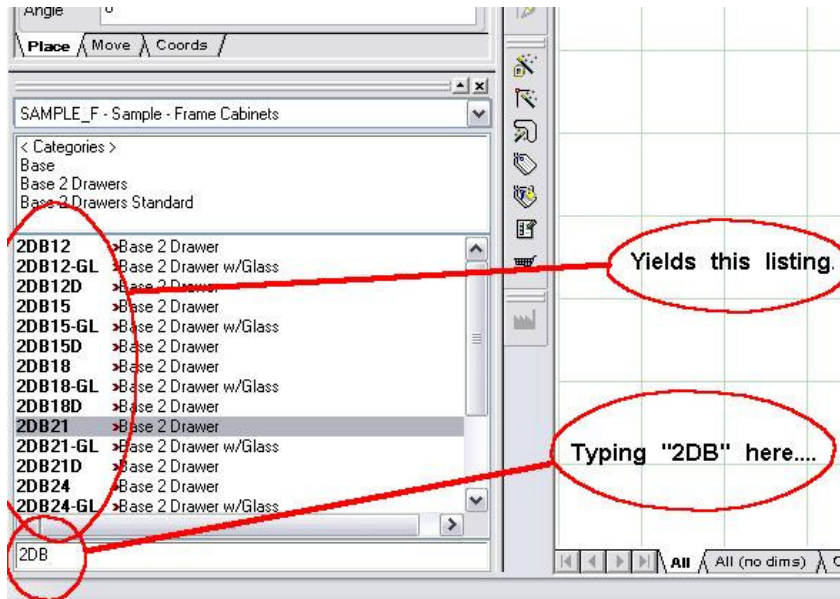
All too often, I find that Designers struggle to locate Manufacturer Product in some of the smallest 2020 catalogs much less some of the larger product offerings.

We always recommend that you have your Manufacturer's written catalog open in front of you when designing so that you can identify items by their "product codes".

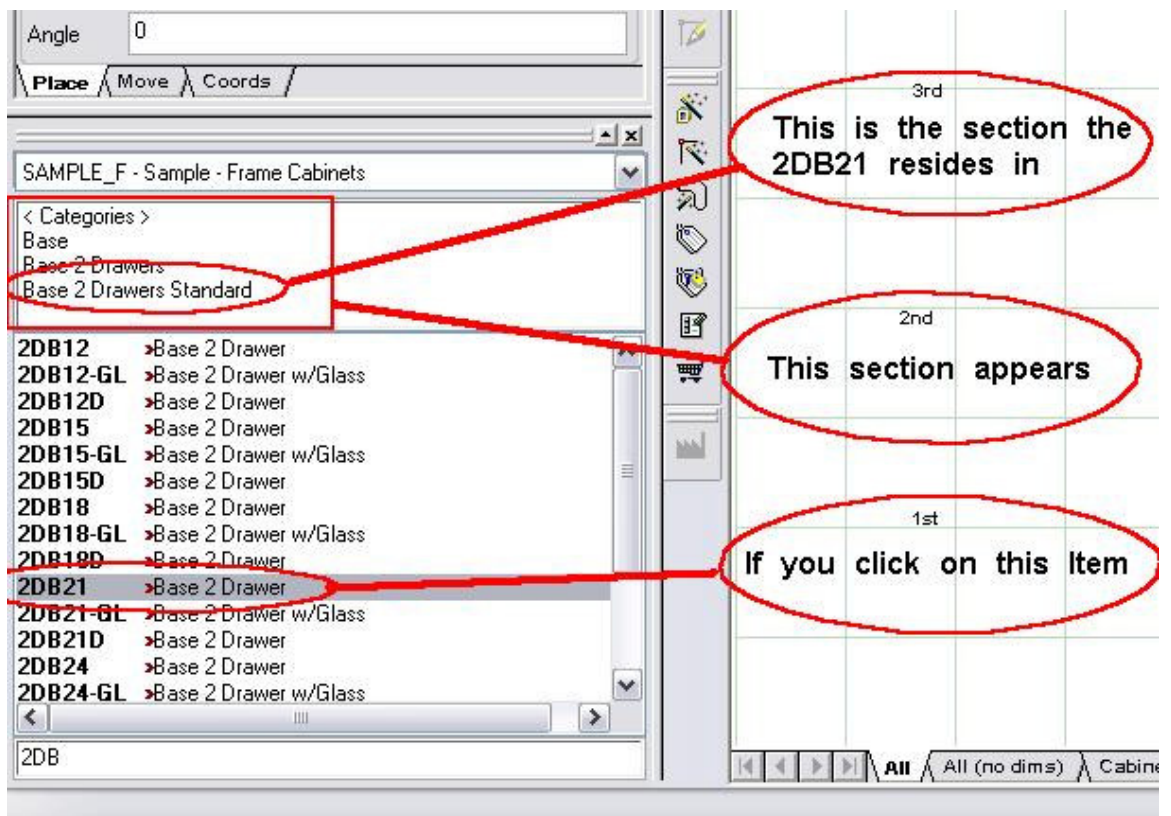
You can then quickly locate most product in a 2020 catalog by typing the code in the search slot. (See graphic below)



Once you highlight the item from the resulting search (requires a minimum of 3 characters typed in), you can identify the section from which it is located by dbl-clicking on the last hierarchal listing. (see graphic on next page)



Below is how to locate the section the item is in.



This sure beats clicking through Menu after Menu!