

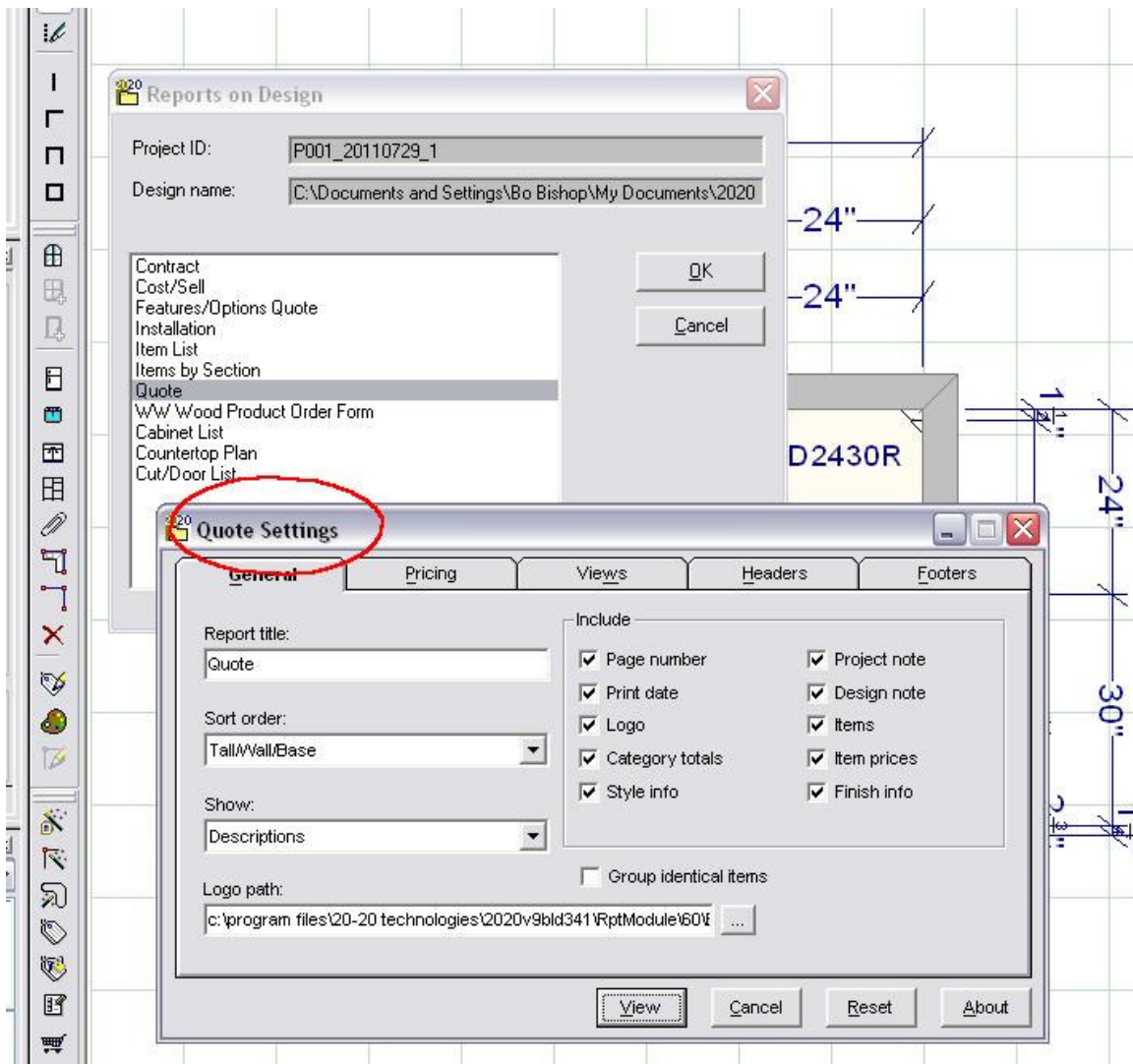
# Quote Settings Dialog Box

For whatever reason, Upon default, when you install your Version of 2020 Design, 2020 has a strange setting for the Quote Report.

Have you ever noticed that upon running the “Quote” from Reports on Design, your product lists Wall Cabinet, Wall Cabinet, Base Cabinet, Base Cabinet, Filler, Ect?

Easy Fix!

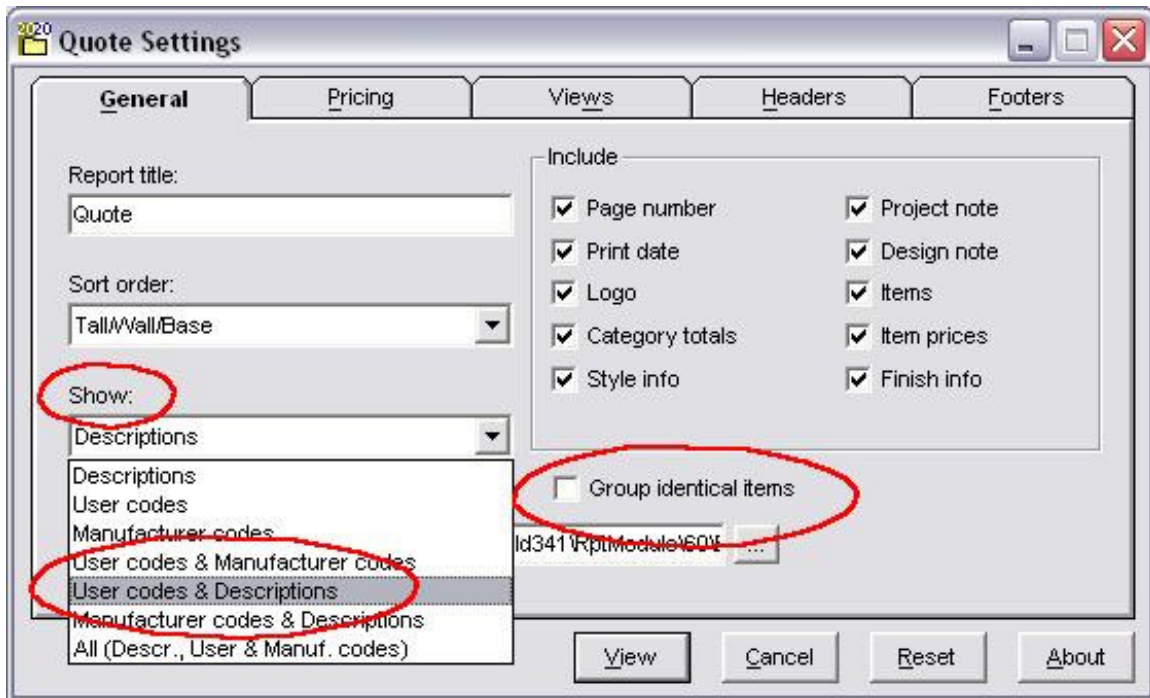
Upon accessing the “Quote” from the Reports on Design Dialog Box, another box pops-up, (folks usually blow past this box by clicking on the VIEW Button) Well...hold-up a minute and stop on that “QUOTE SETTINGS” Window. (See Below)



On the Quote Settings Box, Select the Drop-Down under “Show:” and select “User Codes and Descriptions”.

Now...I recommend this setting....however, play with it!

I DO NOT RECOMMEND using Manufacturer Code with BBA LLC catalogs but, in reality, it’s up to you. (See Below)

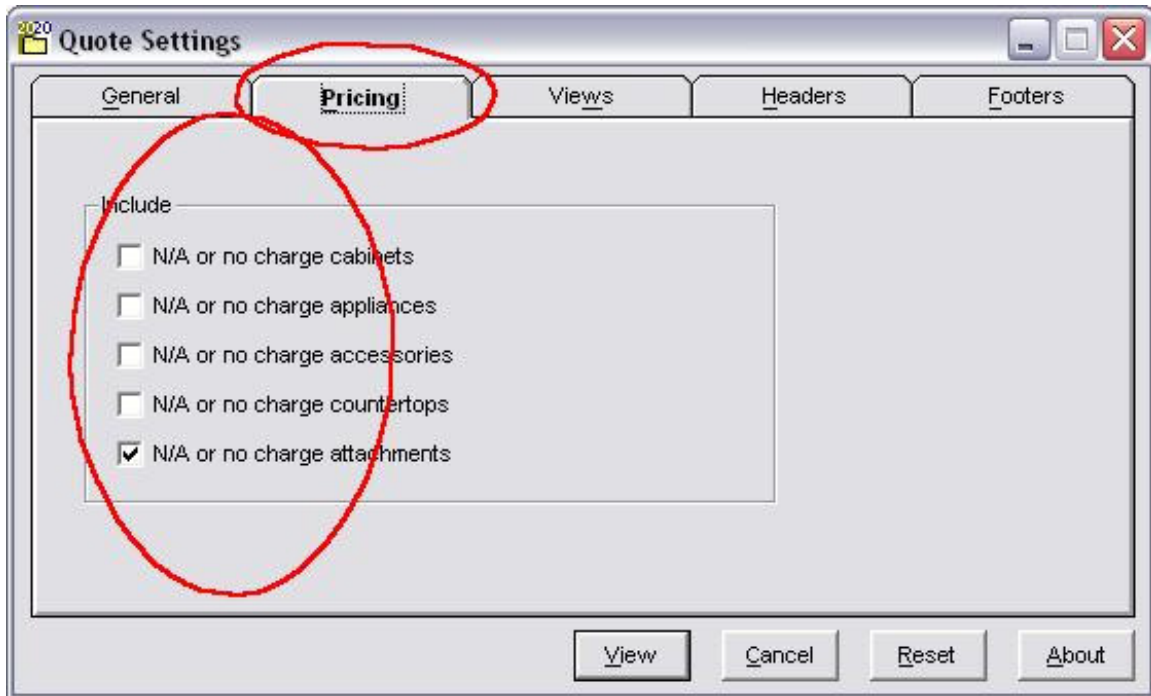


I recommend always showing the User Code because the entire database system is based on the User Code Field. If you perform a search via the Search Slot, it is searching the User Code Field (not the manufacturer code).

You can modify the “Sort Order:” via the Sort Order Drop-Down if you like which will list your product according to the preset Orders offered by the Drop-Down.

In addition, if you wish, you can place a check mark in the “Group Identical Items” check box and then if you have two Fillers which are un-edited, it will list as a quantity of 2 on a single line instead of listing them individually in the body of the quote form.

You can also eliminate erroneous listing of Graphix Attachments and other undesired “zero price” items by removing the check marks from the Pricing Tab. (see below) Just click on the check mark and they will go away.



Placing the check mark in the box means these items WILL BE included. Understand that all these settings may be Manufacturer specific so, test them or modify them when using different catalog creator catalogs or manufacturer catalogs.

If you set these settings and advance to VIEW and then successfully exit your settings will stay as you last set them.

If you should happen to access the 2020 Quick EXIT FUNCTION (Crash) that has occasionally been encountered using the software (we are realistic here cause we know it happens from time to time) these settings may be lost and you will have to re-set them when you recover and come back to run a quote.

No-No, these settings doesn't cause it to tip-over, 2020 just gets a mind of it's own every once in a while and decides it is just...outta here!